



# EVSC Reopening & Continuous Learning Plan

2020-2021



## CONTENTS

- 03 Introduction
- 04 Guiding Principles
- 05 Resources & Research
- 08 Operating Levels
- 10 Academic Plan
- 16 Health & Safety Plan
- 22 Cleaning & Disinfecting
- 23 Operations Plan

\* This document reflects information as of July 21, 2020

## INTRODUCTION

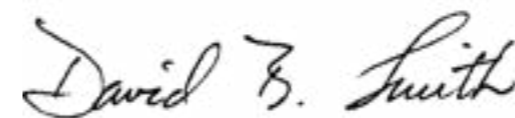
The unprecedented challenges presented by COVID-19 have created significant hurdles for our families, our community and our school district. Throughout this time, the EVSC has remained committed to the safety and well-being of our students, families and staff. During the past five months, relevant research has been reviewed, a thorough analysis of our facilities has been completed, consultations with healthcare professionals have been undertaken, and best practices have been implemented to ensure the safest learning environment for students and staff alike.

Our School Reopening Plan prioritizes what is best for our students and staff, and provides options for families for their child as school resumes. We have invested heavily in preventative measures for all – including extending the hours of our healthcare professionals and hiring additional staff to allow for social distancing. Upon review of our plan, we hope all will see the intentionality used to develop a safe and effective learning environment for all of our children and their families.

Relying upon our guiding principle of collaboration and cooperation, we will continue to communicate with our families through text, email and phone notifications, as well as through social media. The EVSC also has a designated COVID-19 webpage, found at [www.EVSCschools.com/covid-19](http://www.EVSCschools.com/covid-19) with resources for families. As always, you may continue to utilize the Contact Us button on our EVSCschool.com webpage as an additional means of communication.

We have missed our students and look forward to seeing them again soon. Thank you for your patience and support of our staff, schools and children, especially in these challenging times that require the collaboration and cooperation of all involved. By now we have all learned that things can change very quickly when dealing with COVID-19, so make sure you continue to check the EVSC website and follow us on social media for the most up to date information. #WeAreEVSC

Sincerely,



Dr. David B. Smith  
EVSC Superintendent

## GUIDING PRINCIPLES



Health & wellbeing of students and staff



Options to meet the needs of students and families



Collaboration and cooperation of all community stakeholders

## RESOURCES AND RESEARCH

### Guiding Organizations

#### Centers for Disease Control (CDC)

The EVSC is guided by the Centers for Disease Control (CDC) in deciding when and how to safely reopen and operate our schools. The CDC recommends a number of personal prevention practices and environmental cleaning and disinfecting protocols to help lower the risk of COVID-19 exposure and spread when schools are open for instruction.

The EVSC continues to adhere to CDC considerations, in conjunction with state and local laws, rules, and regulations, when preparing to reopen schools.

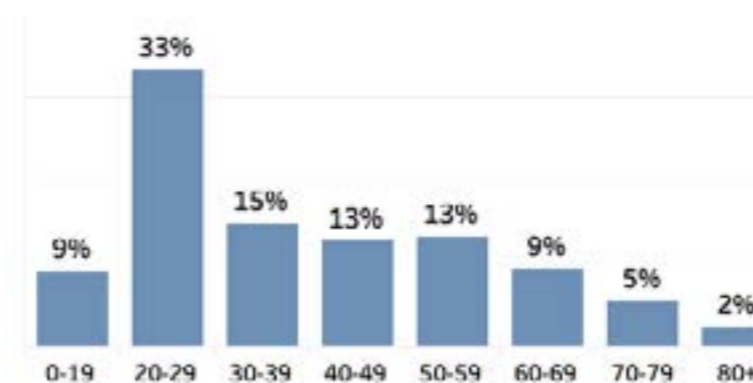
#### Indiana Department of Education

The Indiana Department of Education has developed IN-CLASS, Indiana’s Considerations for Learning and Safe Schools. IN-CLASS was developed in partnership with the Governor’s office, the Indiana State Department of Health, the Indiana Family and Social Services Administration, the Indiana High School Athletic Association, and IDOE’s Reentry Advisory Group, comprised of practitioners and professional organizations.

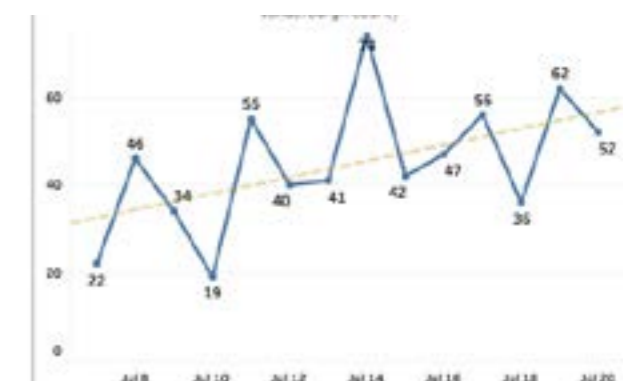
#### Vanderburgh County Health Department

The EVSC is in continuous communication with the Vanderburgh County Health Department to monitor spread, track cases, and identify trends when gauging the risk of COVID-19. The Health Department publicly and regularly reports the number of positive, negative, and total number of COVID-19 test results for the county, as well as deaths. The Department also provides demographic information (e.g., sex, race, ethnicity, age) for all positive cases.

% of Positive COVID-19 Cases by Age (as of July 20, 2020)



Documented New Cases July 8 - July 20, 2020



# GUIDANCE FROM STATE HEALTH DEPARTMENT

## COVID-19 Screening for Parents

**Every morning before you send your child to school please check the following:**

**1** Your student does **NOT** have a fever greater than 100.4 degrees *(may be lower based on your school's policy)* OR lower if your child is not feeling well.

EVSC will use its existing policy of 100.0 degrees

**2** Other signs of illness such as:

**HEADACHE**  
**CONGESTION OR RUNNY NOSE**  
**FEVER 100.4\***  
*\*or school board policy if threshold is lower*  
**NAUSEA OR VOMITING**  
**SORE THROAT**  
**MUSCLE PAIN AND FATIGUE**  
**COUGH**  
**SHORTNESS OF BREATH OR DIFFICULTY BREATHING**  
**DIARRHEA**  
**NEW LOSS OF TASTE OR SMELL**  
**CHILLS**  
**NEW LOSS OF TASTE OR SMELL**

\*The EVSC will use 100.0

**3** Were you in close contact (within 6 feet for more than 15 minutes) with anyone confirmed with COVID-19 within the last two weeks?

**➔** If the answer is **YES** to any of the questions, **DO NOT** send your student to school. Instead, begin quarantine of your child and contact your healthcare provider. Strongly consider COVID-19 testing.



## COVID-19: When a student, faculty or staff member can return to school

Individual	Symptomatic	No Symptoms
Not Tested with Alternate Explanation (strep, influenza, etc. as determined by a provider)	May return to school after 24 hours resolution of fever <b>AND</b> note (including email and fax) from provider stating the individual has an alternate diagnosis and the provider believes it's appropriate for the patient to return to school.	N/A
Not Tested Without Alternate Explanation	Must remain home for at least 10 days from the first day symptoms appeared <b>AND</b> 72 hours fever-free without fever-reducing medicine and with improvement of respiratory symptoms.	N/A
Tested and Negative	If no alternative explanation, isolate for at least 10 days from the first day symptoms appeared <b>AND</b> 72 hours fever-free without fever-reducing medications and with improvement of respiratory symptoms. The test may have been a false negative. The individual can return to school if tested negative <b>AND</b> with a note from the provider stating they believe the patient to have an alternate diagnosis and it's appropriate for the patient to return to school. (ISDH strongly recommends the time-based strategy versus the two-test strategy, which is under review by the CDC.)	May proceed with attending school. <b>EXCEPTION:</b> A known close contact (within 6 feet of a confirmed case for more than 15 minutes) must complete a 14-day quarantine, even if test results are negative for COVID-19.
Tested and Positive	Must remain home in isolation for at least 10 days from the date symptoms began <b>AND</b> 72 hours fever-free without fever-reducing medications and improvement of respiratory symptoms.	Isolate at home for 10 days from the day the test was taken. *If the individual develops symptoms, then isolation time starts on day 1 of symptoms (see symptomatic tests positive.)
Close Contact (within 6 feet for more than 15 minutes of someone with confirmed COVID-19)	N/A If an individual becomes symptomatic, refer to the symptomatic scenarios. The individual must quarantine for 14 days after contact with the COVID-19 Positive person even if the student has an alternate diagnosis for symptoms.	Quarantine for 14 days before returning to school. Must remain symptom-free. If individual develops symptoms, then refer to the symptomatic scenarios.

Note: QUARANTINE keeps someone who was in close contact with someone who has COVID-19 away from others. ISOLATION keeps someone who is sick or tested positive for COVID-19 without symptoms away from others, even in their own home.



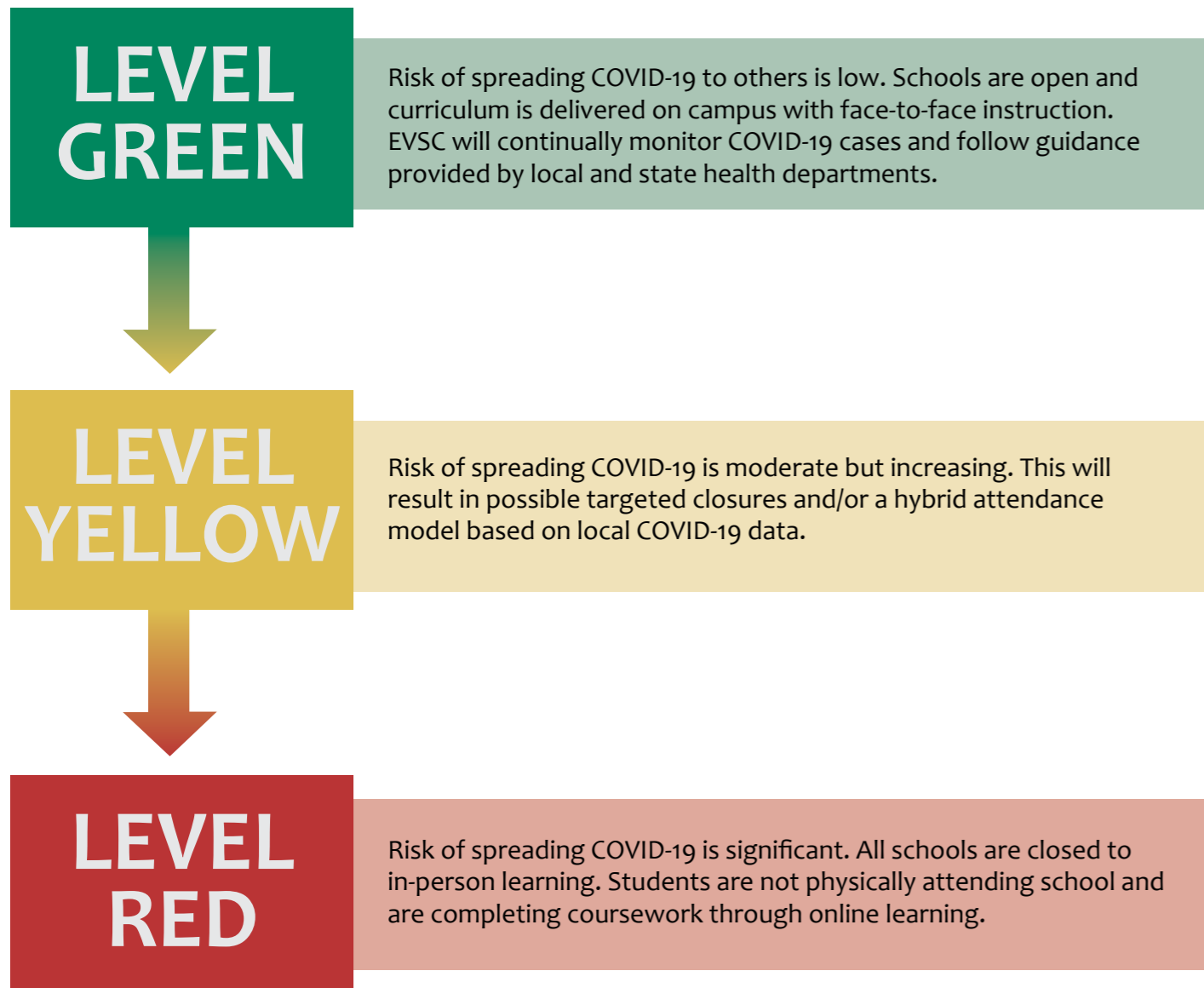
Updated: 7/8/20

# EVSC Reopening Plan

## OPERATING LEVELS

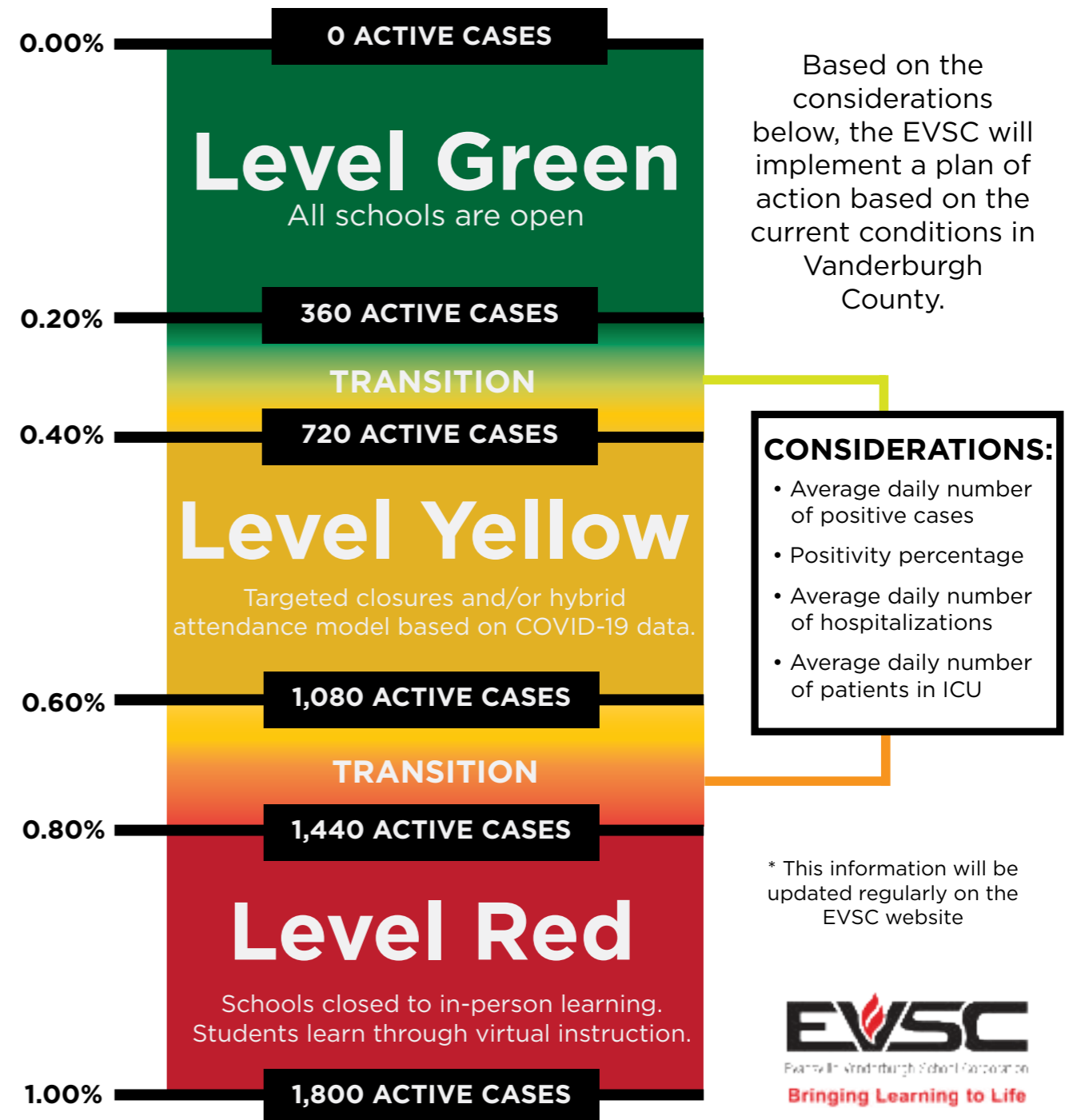
Based on conditions of COVID-19 in Vanderburgh County

The EVSC developed this School Reopening Plan that includes data-driven and safety-minded criteria in monitoring the levels of COVID-19 in our community. The aim of this approach is, first and foremost, to protect the health and wellbeing of our students and staff while mitigating the likelihood of COVID-19 exposure, and maximizing opportunities for learning.



## EVSC OPERATING LEVELS

Based on conditions of COVID-19 in Vanderburgh County

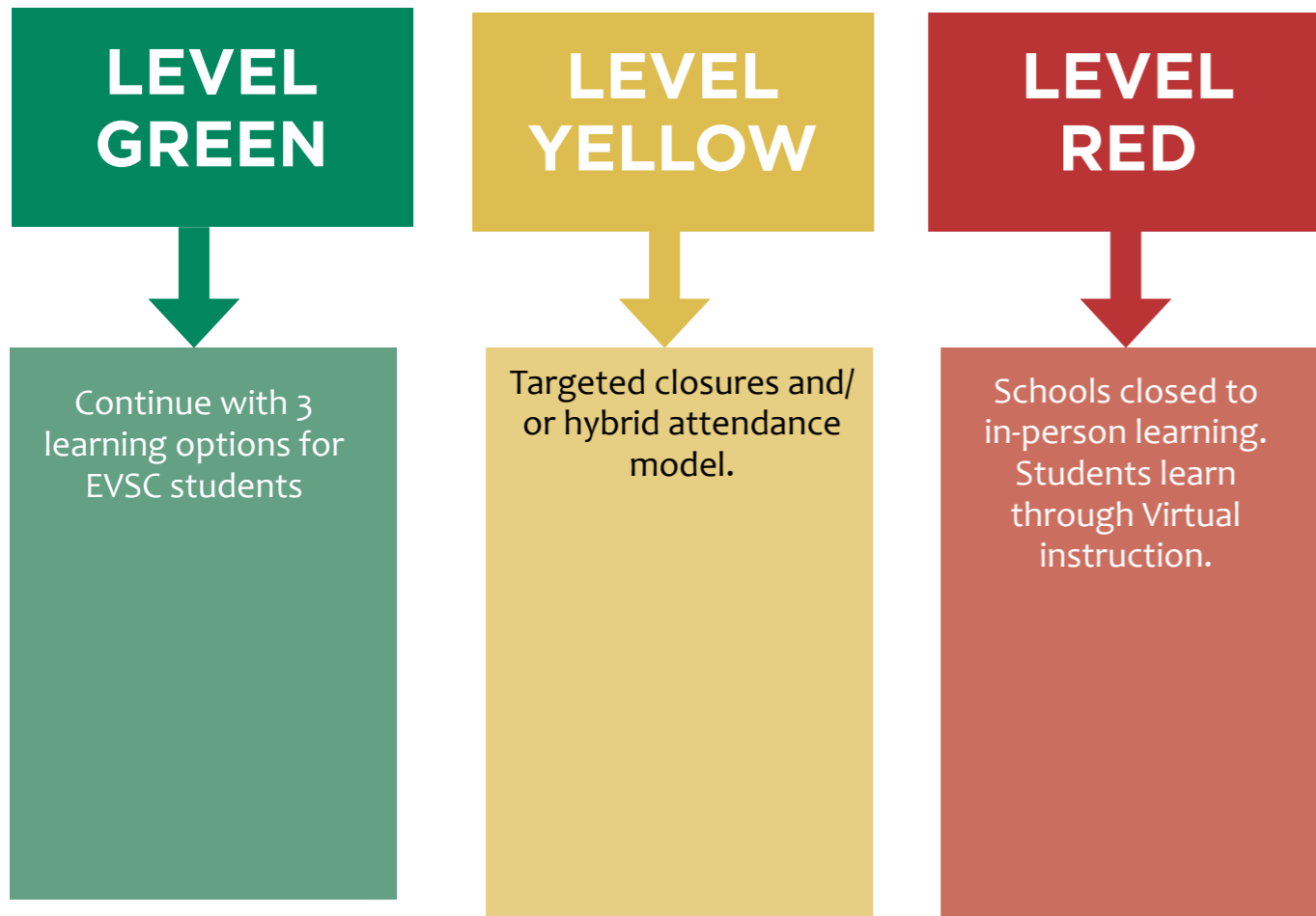


Active Cases, % of Population of Vanderburgh County (180,000)



# EVSC Reopening Plan

## ➤ Academic Plan (2020-2021)



## LEVEL GREEN

Continue with 3 learning options for EVSC students

- **EVSC Learning at School:** High quality instruction within the school/classroom setting with safety and health considerations including social distancing and including extra and co-curricular offerings, following state and local guidance.
- **Temporary Remote Learning:** High quality, short term remote learning for students who are unable to attend school due to health related reasons with a return to the regular classroom setting as soon as possible. This short term learning at home option (typically 2 weeks - one month) is directly health related to COVID-19. If a student is home for an extended time due to COVID related illness, quarantine or isolation, school staff will reach out to communicate with students/families regarding this option for learning. Attendance will be taken daily and if a student is well enough to complete assignments and participate in class, they will not be counted absent from school.
- **EVSC Virtual Academy School at Home:** Full-time K-12 EVSC school virtual option. Students in the EVSC Virtual Academy enroll on a full-time basis and must remain within the program for at least one semester for high school and one quarter (9 weeks) for elementary and middle school. Elementary curriculum platform (Edgenuity) and high school curriculum platform (APEX) are aligned with Indiana Academic Standards and high school offerings include all core classes, as well as electives, and higher-level Advanced Placement or honors courses. Enrolled students will not participate in extra or co-curricular activities. Current EVSC students should enroll prior to the start of the school year and students and families are required to participate in orientation meetings.

## LEVEL YELLOW

Targeted closures and/or hybrid attendance model based on Covid-19 data. Potential examples include, but are not limited to: targeted school closures, alternating days of student attendance, or combinations of in-person and virtual learning. The EVSC Virtual Academy will continue as normal.

# EVSC Reopening Plan

## ➤ Academic Plan (2020-2021)

### LEVEL RED

Schools closed to in-person learning. Students learn through virtual instruction.

In the event that individual schools are not open for learning at school, EVSC Virtual Learning will be utilized.

- **Virtual Learning:** After the Spring of 2020, EVSC has increased capacity, expectations and commitment to high quality virtual learning to meet the needs of our students. As per IDOE guidance, virtual instruction should mirror the regular instructional day to the greatest extent possible.
  - For the 2020-21 school year, all K-12 students will have a device to take home for learning.
  - EVSC has upgraded internet access and partnered with community agencies to increase accessibility for students.
  - Students will find assignments in one platform, Google slides or Google classroom for elementary and Google classroom for middle school and high school\*.
  - Your child's teachers will provide synchronous (real time) instruction daily. (Webex or Google Meet will be recorded for students who may not have access to the internet at that time.)
    - **High School:** Courses will be taught daily through a virtual format following the school schedule.
    - **Middle School:** Core courses will be taught daily through virtual format following the school schedule, with related arts courses on a rotational basis.
    - **Elementary School:** Schools will communicate specific schedules with daily core instruction and related arts courses on a rotational basis.
  - Attendance will be taken daily based on participation in synchronous (real time) instruction, and/or demonstration of evidence of learning.
  - Special education and EL teachers collaborate with general education teachers to provide appropriate support for students.
- The EVSC Virtual Academy will continue as normal.

\* Special program platforms: New Tech Institute (ECHO), EVSC Virtual Academy (APEX or Edgenuity), and RAMP (APEX).

## ➤ GAIN Whole Child Supports Plan

### Special Education

For Special Education students, the EVSC will provide supports indicated by the student's IEP during Levels Green, Yellow or Red. Special education teachers will ensure students have access to the curriculum and will support students and families with virtual or remote instruction. Annual Case Reviews and Case Conference meetings will take place to support students with meeting their IEP goals and make adjustments when needed. During Level Yellow and Red, special education supports including occupational, physical and speech therapy will be provided either in person or through a remote therapy approach.

Students with 504 plans will continue to receive appropriate accommodations.

### Psychology

School psychologists will continue to provide evaluation and support to students based on need and parent input during Level Green, Yellow and Red following local and state guidelines.

### Counselors/Social Workers/Social Emotional Learning (SEL) staff

Per guidelines at each level, EVSC counselors, social workers and SEL team members will provide in-person, virtual or phone support to students and families based on existing relationships and identified needs.

### Social Emotional Learning

The EVSC has always been committed to making sure all students have the skills they need to succeed in life. That focus is even more critical this year, as students return to class. To help them cope with changes, and settle back into school, the EVSC will spend time each day working with your student in the following areas:

- **Safety & Procedures:** Students will learn school-specific procedures for hygiene including handwashing and how to wear their masks. Students also will learn about their school-specific practices to maintain safe social distancing.
- **Community Building:** Students will participate in culturally inclusive community building lessons and activities. During these lessons, students will begin to identify and share their unique strengths, cultures, family make-up, and interests.
- **Social Emotional Learning:** All students will take part in the EVSC's Social Emotional Learning (SEL) Curriculum when returning. K-8 students will take part in the lessons throughout the school year. During these lessons, students will review foundational practices in SEL and begin to develop coping or "refueling skills" that will help them manage emotions and learn at their highest potential.
- **Mental Wellness:** Students will have opportunities to learn about and practice coping and mindfulness skills. By developing these skills, all students will learn healthy ways to manage stressors they may be experiencing. As part of EVSC's SEL curriculum, students will also develop the ability to pause, notice, and identify emotions so they can share with others any challenges they may be experiencing.
- **Student Support Services:** Some students may be experiencing more significant emotional challenges, including fears or anxieties, sadness, difficulty concentrating, or trauma. Student support services include school nurses, counselors, school social workers, school psychologists, and SEL specialists. This team will provide additional interventions to support our students having these challenges.

# EVSC Reopening Plan

## ➤ Academic Plan (2020-2021)

### English as a Second Language

The ESL program continues to support and provide English Learners (ELs) the best possible opportunities to develop English language proficiency regardless of virtual or in-person learning. We will continue to meet the academic and language development needs of our students in alignment with WIDA English Language Development (ELD) standards.

### English as a Second Language (ESL) Teachers

ESL teachers are charged with developing communication and increasing English language proficiency. The ESL teachers tailor support for the individual or small groups of ELs, as they develop the necessary basic interpersonal communication skills and academic language to fully engage with the content materials.

### Maintaining English Language Development Services and Equitable Access to Grade-level Content

- English language development (ELD) services will continue for all English learner students. Note that the structure and schedule of services may look different from what the school typically offers, especially if remote learning is being instituted.
- Individual Learning Plans (ILPs) will continue to be written to reflect how EL students are gaining access to core content instruction and assessment. The ILP remains the basis for collaboration between classroom teachers and EL staff throughout the school year, regardless of in-person or virtual learning.

### Family Engagement and Two-Way Communication

In a time when the critical information is being released from schools and officials regularly, it is of the utmost importance that communication with English learner families is done so effectively. Additionally, language support might be needed in navigating new technologies or programs. All EVSC teachers have access to Talking Points and Google Classroom, which contain translation features. For languages not provided, we are able to provide translation and/or interpreters to effectively communicate with families.

### Before & After School Care/Extended Day Centers

- Extended Day Center employees will be required to prescreen and wear masks when not able to properly social distance.
- The same face mask and social distance guidelines that are enacted for the school day will be maintained for EVSC Extended Day Centers.

### Athletics, Extra Curricular and Co Curricular Activities

- The EVSC follows the guidance of the Indiana High School Athletic Association and has developed a Return to Play plan. [Click here](#) to access the plan. The EVSC also follows guidance from INClass from the Indiana Department of Education and the Indiana State School Music Association.

### Visitors

- Until further notice, visitors will not be allowed to eat lunch with students or provide volunteer services at the school due to concerns of exposure to Covid-19.
- Only essential visitors will be allowed into a school during school hours.
- Whenever possible, visitors to the school will be limited to the office area.
- If parents need to drop off supplies, medicine, lunch, etc., they will be asked to leave items by the front office. The school secretary will call the student to pick up the items.
- Parents will not be buzzed through the second door unless they have scheduled a meeting. If parents need to speak to a teacher, counselor, administrator or other staff member, we ask that a meeting is scheduled in advance. Use of phone or video conferencing will be encouraged.

### Recess

- There will be assigned areas of play during recess.
- There may be restrictions of activities that encourage student contact, such as no soccer games, no basketball games, etc.
- Staffing of playground supervision will be adequate to monitor and encourage active movement and discourage social gathering of large groups of students.
- During inclement weather, students will have indoor recess and will be encouraged to play and socialize within their own personal learning spaces.



# EVSC Reopening Plan

## Health & Safety Plan

### EVSC Protocols/Policies

- Parents should screen their students at home prior to coming to school. Students and staff are to stay home if sick or if they have at least 1 symptom of COVID-19. ([See COVID-19 Screening Information](#))
- Students and staff are expected to wear masks whenever social distancing is not possible.
- In classrooms, students will be social distanced and all student desks will face the same way.
- Students will wear face masks on school buses. Students will have assigned seating and no more than 2 students to a seat will be allowed.
- Only essential visitors will be allowed into a school. Schools will have procedures for dropping off items for students. Due to the risk of spreading COVID-19, visitors will not be allowed to eat lunch with students or provide volunteer services for the 2020-2021 school year.
- Athletics, extracurricular and co-curricular activities will be conducted in accordance with the guidance from the Indiana High School Athletic Association (IHSAA), Indiana State School Music Association (ISSMA) and the Indiana Department of Education (IDOE).
- Water fountains will only be used to fill water bottles. Traditional use of water fountains will not be allowed.
- Students are asked not to share belongings or supplies.
- The EVSC, in collaboration with the Vanderburgh County Health Department, will be hosting on-site immunization clinics at schools across the district. Registration will occur online. More information will be forthcoming.
- Per ISDH guidance, any student exhibiting symptoms of COVID-19 should be excluded from school and presumed to have COVID-19 until that student presents written documentation from a healthcare provider stating an alternate diagnosis and provider believe it's appropriate for student to return to school. Without that documentation, the student would need to be excluded for 10 calendar days and be fever-free for 72 hours without the use of medication and with improvement of respiratory symptoms. Please contact your student's healthcare provider before school starts to discuss chronic issues such as allergies, asthma, migraines, etc. that mimic COVID-19 symptoms.

## COVID-19 Symptoms

If your student has one or more of these symptoms, do not send them to school. The Indiana State Department of Health recommends beginning quarantine and contacting your healthcare provider.



## Screening your Student

Parents should screen their students at home prior to coming to school. For complete guidance on screening, see [page 6](#) for information from the Indiana State Department of Health.

Every morning before you send your child to school, please check the following:

1. Your student does NOT have a fever of greater than 100.0 degrees.
2. Your student does not have other signs of illness such as the symptoms listed above.
3. Were you in close contact (within 6 feet for 15 or more minutes) with anyone confirmed with COVID-19 within the last two weeks?
4. If the answer is **YES** to any of these questions, **DO NOT** send your student to school. Instead, you should begin quarantine and contact your healthcare provider.

# EVSC Reopening Plan

## Health & Safety Plan

To limit COVID-19's impact on our schools, we must focus on the fundamentals of health and safety in order to mitigate risk for students, staff, and families during the 2020-2021 school year. The EVSC's use of face masks is in compliance with local, state and federal guidelines.

### Face Coverings

Research tells us that COVID-19 spreads mainly from person to person through respiratory droplets produced when an infected person coughs, sneezes, talks, or raises their voice. These droplets can land in the mouths or noses of, or be inhaled by, people who are nearby. We now know that a portion of individuals with COVID-19 are asymptomatic, and even those that eventually develop symptoms can transmit the virus before showing any symptoms.

As we return to school, our goal is for students to stay in school and to minimize specific school closures and quarantine situations for students. The CDC and the Indiana Department of Education recommends that face coverings should be worn by staff and students (particularly older students) and are most essential in times when social distancing can not occur. This is supported by the Vanderburgh County Health Department and medical professionals. We recognize that face coverings may be challenging for students and staff (especially younger students) to wear in all-day school settings and have factored that into the plan to protect the health and safety of students, staff and families.

#### Face coverings should:

- Cover the nose and mouth and be secured to the head with ties or straps or simply wrapped around the lower face.
- Fit snugly but comfortably against the side of the face.
- If cloth masks, masks should be washed regularly.
- Include multiple layers of fabric.
- Allow for breathing without restriction.
- Align to school dress codes.

## Healthy Behaviors



**Stay home if you are sick.** Do not go to school or work if you have at least 1 symptom of COVID-19.



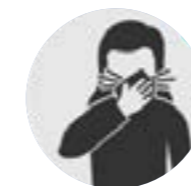
**Wash your hands.** Wash your hands frequently for at least 20 seconds with soap and water. If soap isn't available, use a hand sanitizer that contains at least 60% alcohol.



**Social Distance.** Maintain at least 6 feet between you and others outside of your home. Avoid close contact (within 6 feet for 15 or more minutes) with those in your home if they are sick. Even if you don't have symptoms, you can still spread the virus.



**Use a Face Mask or Covering.** COVID-19 mainly spreads through water droplets that are expelled when someone talks, coughs or sneezes. Face coverings are meant to protect others, not yourself, since many people are asymptomatic and may not know they have COVID-19. Children under 2 should not wear face coverings. Even with face coverings, maintain social distancing.



**Cover Coughs and Sneezes.** When around others without a cloth face covering, cover your mouth and nose with a tissue when coughing or sneezing or use the inside of your elbow. Immediately wash your hands.



**Clean and Disinfect.** Clean and disinfect frequently touched areas such as doorknobs, light switches and technology. To clean technology, use disinfecting wipes that are damp, not wet. Never use bleach or aerosol sprays on devices.



**Separate and Avoid Sharing.** Students should keep their belongings separated from others and sharing of books, pencils, markers, etc. is discouraged.

# EVSC Reopening Plan

## ➤ Health & Safety Plan

### Student Gets Ill at School Protocol

- As soon as a student is identified with COVID-like symptoms, the student is sent to the school nurse.
- School nurse will triage the student and, as appropriate, isolate the student from others.
- School nurse will notify family.
- Identify any relevant classmates for potential contact tracing, if initiated by the Vanderburgh County Health Department.
- Schools will disinfect the nurse's office and other areas where a sick student was triaged or provided aid.
- Any students sent home with a fever should remain home until they are fever free for 72 hours without the aid of fever-reducing medication, isolate for at least 10 days from the first day symptoms appeared and have improvement of respiratory systems.

### Confirmed Positive COVID-19 Test Protocol

- Parents/guardians are to contact their student's school to report that their student has tested positive and/or had close contact (within 6 feet for 15 or more minutes) to another person that has tested positive.
- A student who is identified as a close contact (within 6 feet for 15 or more minutes) to another individual who has tested positive should quarantine for 14 calendar days.
- School administrators and the school nurse will work with the health department to contact trace and determine possible close contact to other students and staff. If your child meets the health department's close contact definition (within 6 feet for more than 15 minutes), you will be contacted.
- All areas used by a person that tested positive for COVID-19 will be cleaned and disinfected (e.g., offices, bathrooms, and common areas) per guidance by local, county and state health departments.

### When Can a Student Return to School?

See [page 7](#) for complete guidance from the Indiana State Department of Health regarding when students can return to school.

### School Nurse Information

- Working hours for all EVSC school nurses have been extended for this school year. These medical professionals will be available to assist students, families, and staff during the following hours:
  - Elementary School Nurse Hours 7:35 - 3:20
  - Middle/High School Nurse Hours 7:15 - 3:00
- School nurses will wear PPE for the safety of themselves and others.
- There will be a designated area for suspected Covid-19 cases in each school to be used when students are waiting for a parent to arrive at school.
- For safety reasons, parents will not be able to directly access the nurse's office.
- Furniture and high touch areas in the nurse's office used by students will be disinfected after each use.
- The CDC does not recommend that school nurses give nebulizer or other aerosol-producing treatments in the school setting. Please contact your student's primary care provider to ensure your student has a meter dose inhaler, spacer (with mask for younger child) and asthma action plan at school.
- Parents/guardians are encouraged to administer any before school medications for their students at home to reduce the potential exposure to healthy students.
- If your student requires medication at school, please send medication and signed consent form to school with your student. EVSC has medication envelopes available to assist families with the transport of medications to school. Students should drop off medications to the school nurse.

# EVSC Reopening Plan

## ➤ Cleaning & Disinfecting

The EVSC will clean and disinfect all areas of the school building, including classrooms, offices, hallways, entryways, common areas, locker rooms and restrooms.

- High touch surfaces will be disinfected on a regular basis.
- Hand sanitizer dispensers will be maintained regularly.
- Debris containers will be emptied on a regular basis.
- Wet methods will be used on hard flooring surface areas as needed.
- All restrooms will be disinfected regularly.
- All flooring surfaces will be cleaned and maintained on a regular basis.

### Cleaning and Disinfecting Following a Positive Test Result

The following procedures will be used for disinfecting areas where a student/employee who has tested positive has been present.

- Vanderburgh County Health Department will be notified.
- Trained employees using proper PPE will be assigned to the facility.
- Rooms and other areas will be cleaned per the guidance from local, county and state health departments.
- Disinfection will begin using electrostatic sprayers.
- All high touch areas will be disinfected.
- All surfaces horizontal/vertical will be disinfected.
- All furniture will be disinfected.
- Daily disinfecting procedures will be used in nursing stations, locker rooms and restrooms.

# EVSC Reopening Plan

## ➤ Operations Plan

### Transportation

- EVSC bus drivers and attendants will self screen before morning and afternoon routes.
- Students will be required to wear a mask while on the school bus. (Students who do not have a mask will be given one by the driver.)
- Students will be assigned a seat and will sit two to a seat (preferably families will sit together).
- EVSC drivers will clean and disinfect frequently touched surfaces (hand rails, seats, etc.) prior to all pickups and after all drop offs.
- It is requested that parents provide transportation for their student(s) if possible to help reduce the number of students on each bus.

### School Nutrition

- EVSC food service workers will be required to self screen before each shift, as well as wear masks at all times.
- Time has been built into the school day to allow for handwashing prior and after eating meals.
- In an effort to allow for social distancing, some students will eat lunch in locations other than the cafeteria (ex. classroom, media center, gym). If students eat in the cafeteria, they will sit in marked seats to accommodate social distancing.
- Breakfast will vary at each site. Some schools have the capacity for students to eat in the cafe, while other schools will have students pick up and take their breakfast to the classroom or breakfast may be delivered to the classroom.
- All food will be individually wrapped or have a lid when possible.
- In an effort to expedite the time students spend in line with other students, there have been some updates to our food and nutrition processes for the 2020-2021 school year, including:
  - Limited menu offerings.
  - Offer vs. Serve will be eliminated for elementary and middle school, which means students will have to take all items on the menu, including milk.
  - Disposable trays/containers will be used for any student not eating in the cafeteria and prepackaged, disposable utensils will be provided.
- In the event of a school closure, meals will be available for pick up at specific school sites.



## Contact Us

// Evansville Vanderburgh School Corporation

// 812-435-8453

// [covid19@evsck12.com](mailto:covid19@evsck12.com)